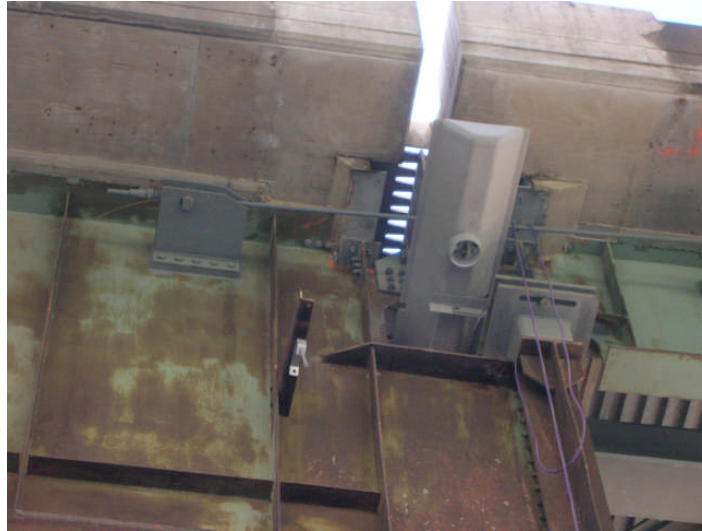


Fiberglass Troughs – St. Louis, MO 2007



Service

Provide replacement troughs under expansion finger joints and drains across several four lane elevated US 40/64 bridges in downtown St. Louis, Missouri.

Features & Benefits

The fiberglass troughs and pipe provided a light-weight system in limited spaces directly under the traveled deck. The total project featured several hundred feet of pipe to achieve the final destination for the drains. The non-corrosive fiberglass will not experience the corrosion as the original metallic system.